



# SureFast Poly-Check Trailer Seals

The Poly-Check is an economical, fixed length plastic seal well established in the logistics world for the sealing of trailers.

## Applications

- Railroad cars
- Trucks & Trailers
- Gates and Fire Doors
- Cabinets/Door/Hatches
- In-bond shipments
- Containers

## Features

- One piece seals for maximum security and proper sealing engagement.
- Plastic seal blushes if tampered with.
- Positive snap lock design with protruding locking points, verify locked position.
- As an alternative to “cutting” each seal has an integral break point for easy, authorised removal.

## Materials

- Polypropylene

## Strength Characteristics

Average Pull apart force for polypropylene:  
With standard integral security/break point - 65lbs/29.5kgs  
Non standard solid strap type - 90lbs / 40.8kgs

## Dimensions

10” Poly-Check (6732110.xx)

Length: 289mm (11.5”) x 7mm (.28”)

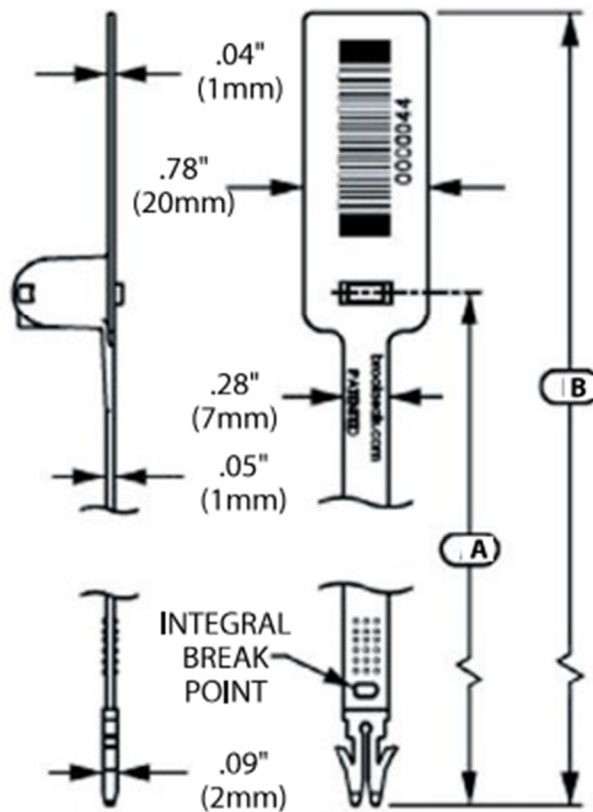
Tail: 245mm (9.65”) x 7mm (.28”)

Flag: 50mm (2.0”) x 19mm (.75”)



The Poly-Check is an economical, fixed length plastic seal well established in the logistics world for the sealing of trailers.

**Marking: Hot Stamped Printing, Numbering (7 digits), Lettering (3 lines of 8 characters), Laser and thermally printed barcoding available on extended flag.**



Known as the;	A = Strap Length	B = Overall Leng
5"	5.11" (130mm)	6.85" (174mm)
7"	6.69" (170mm)	8.43" (214mm)
10"	9.65" (245mm)	11.735" (289mm)

The locking prongs protrude from the dome to verify seal is "locked"

