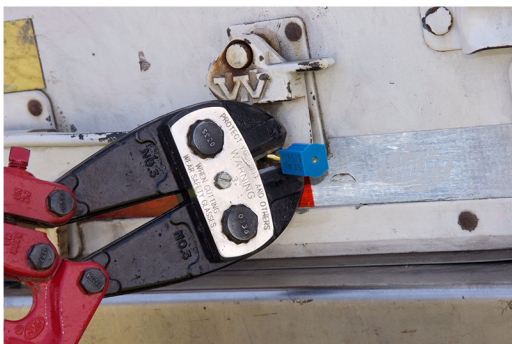




SureFast High Security Bolt Seal

Our SureFast High Security Bolt Seal is an ISO 17712: 2013, C-TPAT Compliant high security bolt seal which consists of a steel bolt and a plastic-coated steel locking chamber.



Applications

- Lorry & Trailer Doors
- Box Car Doors
- Intermodal Containers

Features

- ISO 17712: 2013 and C-TPAT Compliant
- Locking insert spins freely to confirm seal integrity
- High impact plastic cover on locking chambers clearly indicate tampering
- Metal locking end encased in consecutively numbered body
- "H" on the bottom of the body base indicates 'High Security'

Materials

Made of Carbon steel with zinc chromate finish
ABS plastic body on locking case

Strength Characteristics

Average pull-apart force: 4,713lbs (2,138 kg, 21.0 kN)
Average cutting force: 5,477lbs (2,484kg, 24.4 kN)
Average impact force: 30-29 ft-lb (41-53 Nm)
Bending moment: 63 ft-lb (85 Nm)

Dimensions

Bolt: 3.5" (89mm) long and 3/8" (9.5mm) in diameter
Bolt head and lock body conform to ISO 17712: 2013 specifications

Our SureFast High Security Bolt Seals are designed for ISO containers and high value cargo shipments.

Laser Print options available: Name, logo, consecutive numbers, barcode.

