



SureFast Cable Seal

The FlexSecure FS 15 is a 1.5 mm (1/16") anodized aluminium bodied cable seal. FS 15 is regularly used in bulk food and chemical shipments over the road.

Applications

- Bulk Tankers
- High Value Shipments
- Trailer Door Latches
- Railcars
- Container Door Latches
- Valves and Meters

Features

- Tamper-evident cable separates into individual strands when cut and cannot be resealed
- Provides added durability over plastic bodied seals but maintains the colour identification
- Provides a versatile method of identification
- Can be customised by laser printing a name, logo, consecutive numbers and barcode

Materials

Body: Aluminium alloy

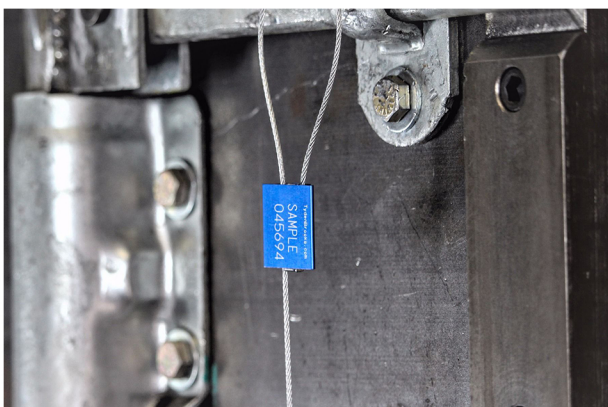
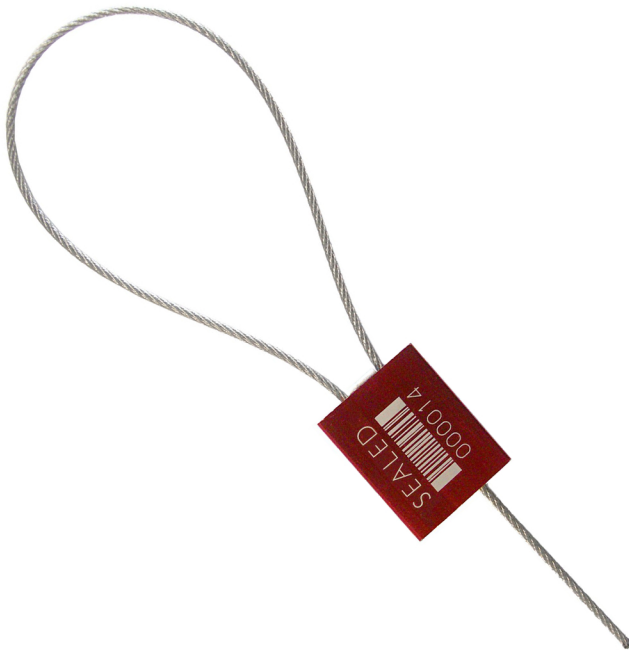
Internal Locking components: Zinc and Steel
Cable: galvanized non-preformed aircraft control cable

Strength Characteristics

Average pull apart strength: 727lbs (330kg)

Dimensions

Body: 1.12" x 0.0. x 0.24 (28.6x 22.9x6.1mm)
Cable Diameter: 1.5mm (1/16")
Cable Length: Standard - 12"
(Custom lengths available)



The FlexSecure FS 15 is a 1.5 mm (1/16") anodized aluminium bodied cable seal. FS 15 is regularly used in bulk food and chemical shipments over the road.

Laser Print options available: Name, logo, consecutive numbers, barcode.

