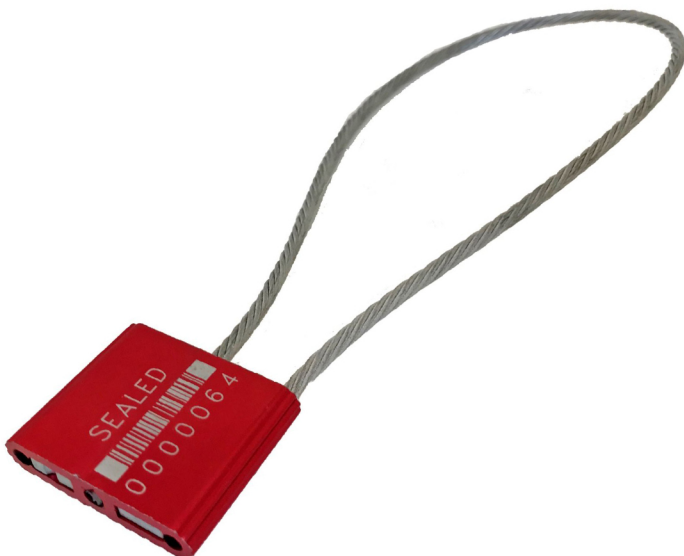
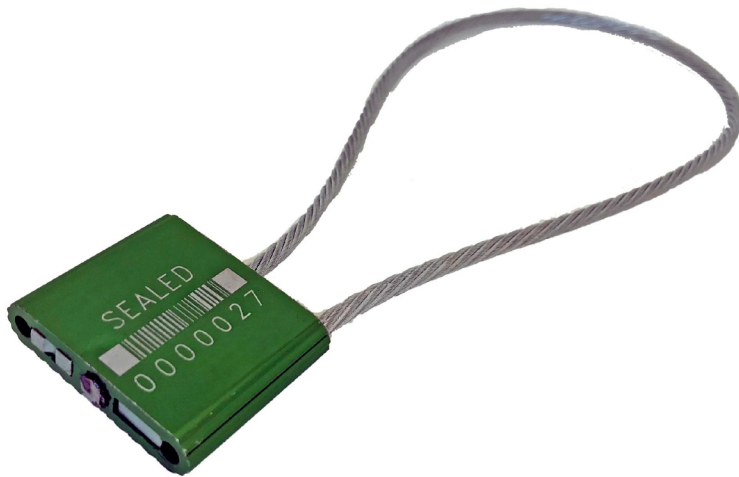




SureFast Dual Flex

The Dual Flex Cable Seal is a double-locking seal that offers an increased level of tamper protection. It is High-security rated per the ISO 17712:2013 testing standard and is C-TPAT Compliant.



Applications

- Container Door Latches
- Rail Cars
- High-Value Shipments
- Trailer Door Latches

Features

- Dual Locking helps prevent ratcheting and shimming.
- Tamper-evident non-preformed steel cable unravels when cut and is galvanized for corrosion protection.
- Customised laser printing name/logo/barcode/consecutive numbers.

Materials

Body: Aluminum alloy

Internal Locking Components: Zinc and Steel

Cable: 4.0 mm galvanized non-preformed cable

Strength Characteristics

Average pull-apart strength: 3000 lbs (13.3kN)

Dimensions

Bolt Diameter: 1.69" x 1.38" x .39"
(43mm x 35mm x 10mm)

Cable Diameter: 4.0 mm (5/32")

Standard Length: Standard 18"

(Custom lengths available)