



SureFast Cable Seal

Our SureFast Cable Seal FS 35 boasts High Security per the ISO 17712: 2013 testing standard and is C-TPAT and PIP compliant.



Applications

- High Value Shipments
- Trailer Door Latches
- Container Door Latches
- Rail Cars

Features

- ISO 17712 Classification - High Security
- Tamper evident non-preformed steel cable unravels when cut and is galvanised for corrosion protection
- Personalised laser marking - name, logo, consecutive numbers and barcode

Materials

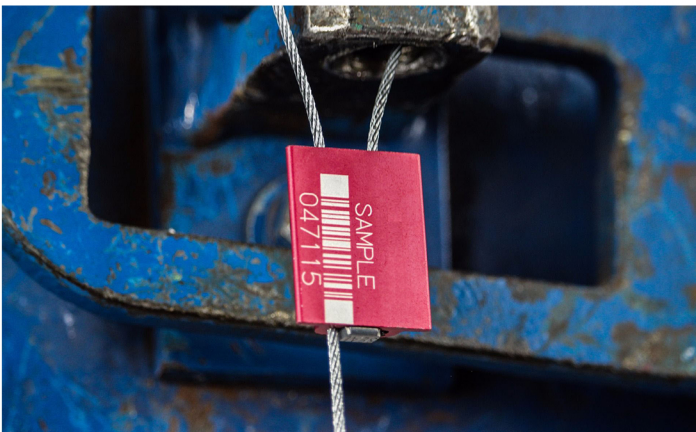
Main body: Aluminium Alloy
Internal Locking Components: Zinc and Steel
Cable: 3.5mm galvanised non-preformed aircraft cable

Strength Characteristics

Average pull-apart strength: 2400lbs (1088kg)

Dimensions

Body: 1.12" x .90" x .30" (28.6 x 22.7 x 7.6mm)
Cable Diameter: 3.5mm (1/8")
Overall length: Standard 12" (Custom Lengths available)



Our SureFast Cable Seal features a non-preform cable which frays wildly when cut and is galvanised for corrosion protection.

The patent pending locking mechanism inside the anodized aluminium housing makes sure your goods are safe in transit.

Laser Print options available: Name, logo, consecutive numbers, barcode.

